

St. Thomas Police Service

2022 Annual Stats

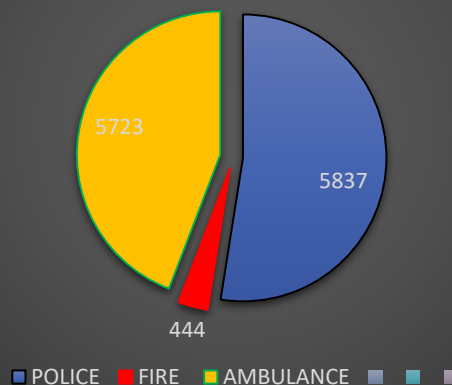
Number of Incidents:

INCIDENTS	2018	2019	2020	2021	2022	Variance 2021-2022
TOTAL	18846	20089	22173	21924	20682	-6 %

E911 Calls for St. Thomas (PPSAP):

AGENCY	2020	2021	2022	Variance 2021-2022
Police (STPS)	6408	6065	5837	-3.8 %
Fire (STFD)	314	385	444	+15.3 %
Ambulance	4294	5103	5723	+12 %
YEARLY TOTALS ALL 911 CALLS (PPSAP)	13397	14137	14455	+ 2.2 %

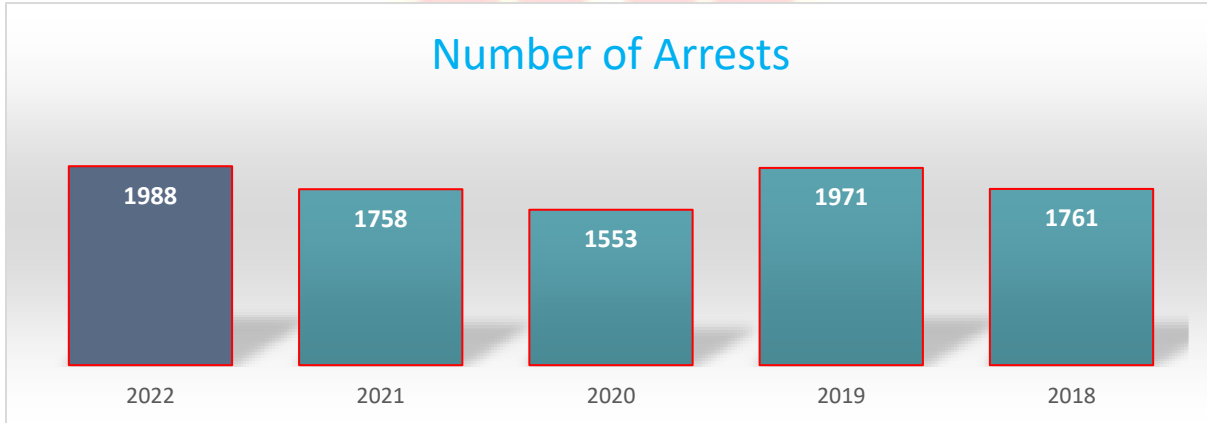
E911 CALLS for St. Thomas (PPSAP Communications Centre)



Number of Arrests;

ARRESTS	2018	2019	2020	2021	2022	Variance 2021-2022
TOTAL	1761	1971	1553	1758	1988	+ 13 %
PRISONER TOTALS AT ECC	1555	1868	1829	1704	2289	+ 34.3 %

*post-pandemic, the ECC facility has been operating with a combination of in-person and virtual court appearances – we are starting to see a return to in-custody matters. These figures represent STPS, OPP and APS court appearances via in-person, audio, and video.



Crime Severity Index - population over 10,000:

St. Thomas	2021 (326 cities)	2020 (325 cities)	Variance 2021-2022
Overall CSI	72.0 (122)	67.5 (134)	+ 6.6%
Violent CSI	55.6 (210)	42.4 (257)	+31%
Non-Violent CSI	77.7 (92)	76.3 (103)	+2%
Woodstock	2021	2020	Variance 2021-2022
Overall CSI	82.8 (94)	76.0 (113)	+ 9%
Violent CSI	60.0 (196)	51 (227)	+18%
Non-Violent CSI	90.7 (63)	84.9 (85)	+6.8%
London	2021	2020	Variance 2021-2022
Overall CSI	88.69 (79)	81 (98)	+9.5%
Violent CSI	106.4 (70)	75.5 (126)	+41%
Non-Violent CSI	82.0 (80)	82.8 (92)	-1%

Number of Criminal Charges:

CRIMINAL CHARGES	2018	2019	2020	2021	2022	Variance 2021-2022
TOTAL	2118	2148	1878	1853	2175	+ 17.3 %

Crimes of Violence:

OFFENCES	2018	2019	2020	2021	2022	Variance 2021-2022
Homicides	0	0	0	0	0	-
Robbery	5	3	7	10	10	-
Assaults (non-sexual)	232	236	253	236	240	+1.7 %
CDSA Offences	149*	79	117	144	109	-24 %

Crimes Against Property:

OFFENCES	2018	2019	2020	2021	2022	Variance 2021-2022
B/E	240	222	238	271	347	+28 %
Thefts Possession/Stolen Property	823	761	842	1061	1095	+3.2 %
Frauds	296	172	140	178	141	-21 %
Arsons	9	19*	10	15	*36	+140%
Mischiefs	211	245	340	335	353	+5.4 %

*majority of arsons were dumpster fires



Criminal Driving Offences:

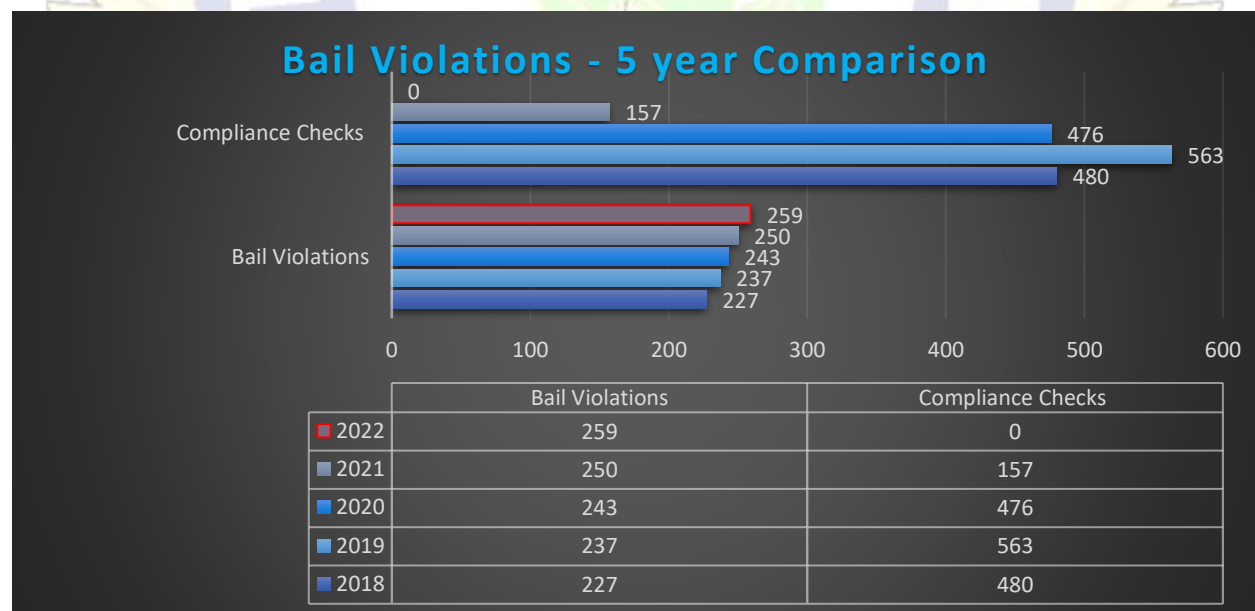
OFFENCES / INCIDENTS	2018	2019	2020	2021	2022	Variance 2021-2022
Impaired Driving (alcohol)	47	43	30	40	47	+17.5 %
*Impaired Driving (drug)	7	1	3	3	0	-100 %
Impaired Driving (Alcohol and Drug)	1	35	29	31	37	+19.4 %
Refuse Breath Sample	4	0	0	1	0	-100 %
Disqualified Driving	23	17	25	21	28	+33 %
RIDE Checkpoints	40	59	31	78	*36	-53 %
Roadside Screening Tests	15	32	47	46	31	-32 %
SFST	-	-	15	7	10	+43 %

* 2022 - Ministry RIDES = 11, Platoon RIDE checkpoint setup = 25.

Bail Violations:

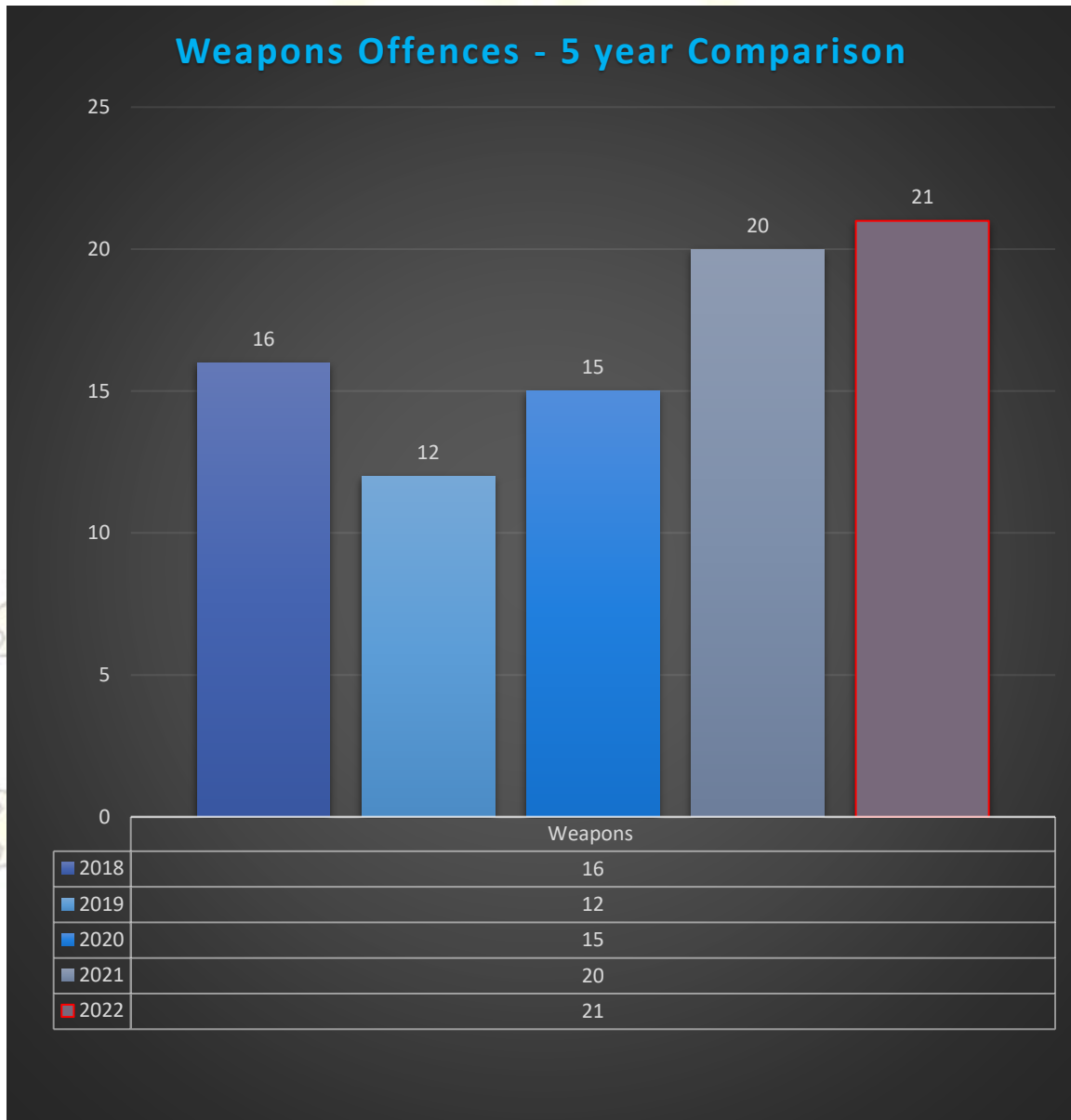
OFFENCES / INCIDENTS	2018	2019	2020	2021	2022	Variance 2021-2022
Bail Violation Charges	227	237	243	253	259	+2.4 %
Compliance Checks - ILPCAS	480	563	476	157	*133	-15.2 %

*4 criminal charges resulted from the ILPCAS checks in 2022 (6 in 2022).



Weapons Offences;

INCIDENTS / OFFENCES	2018	2019	2020	2021	2022	Variance 2021-2022
Weapons Offences	16	12	15	20	21	+5 %



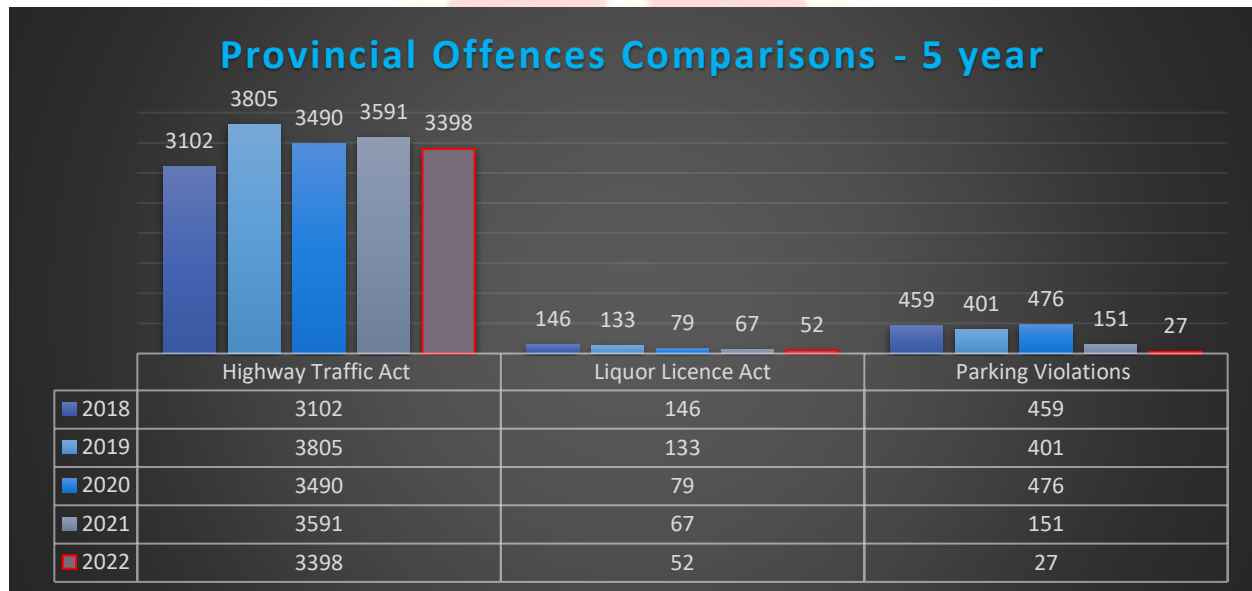
*Weapons offences committed in 2022, primarily included;

- The possession, use of or threats of;
 - Knives or edged weapons
 - Firearms

Provincial Offences;

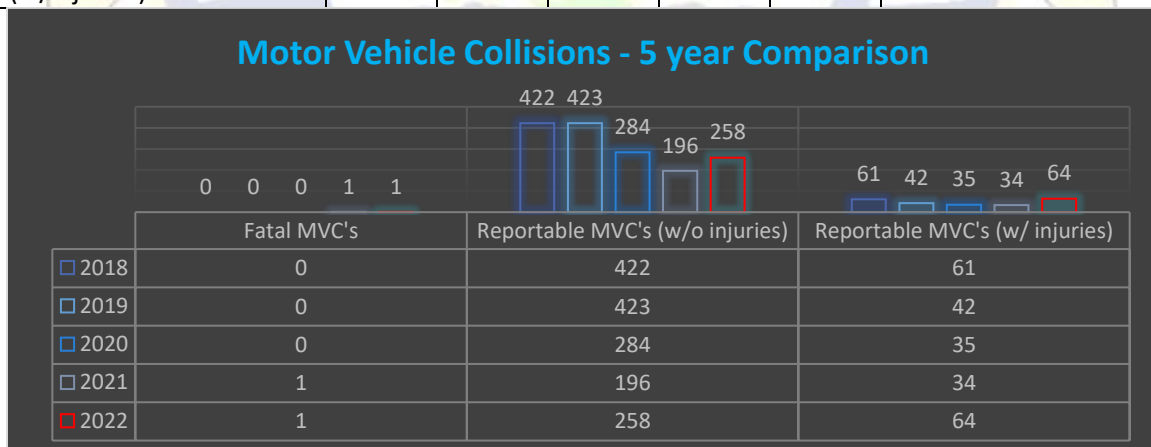
OFFENCES	2018	2019	2020	2021	2022	Variance 2021-2022
Highway Traffic Act	3102	3805	3490	3591	3398	-5.4 %
Liquor Licence Act	146	133	79	67	52	-22.3 %
Parking violations	399	401	476	151	27	-82.1%

*City Bylaw personnel managed the majority of parking enforcement in 2022. This arrangement has allowed STPS frontline officers to focus on core functions.



Motor Vehicle Collisions;

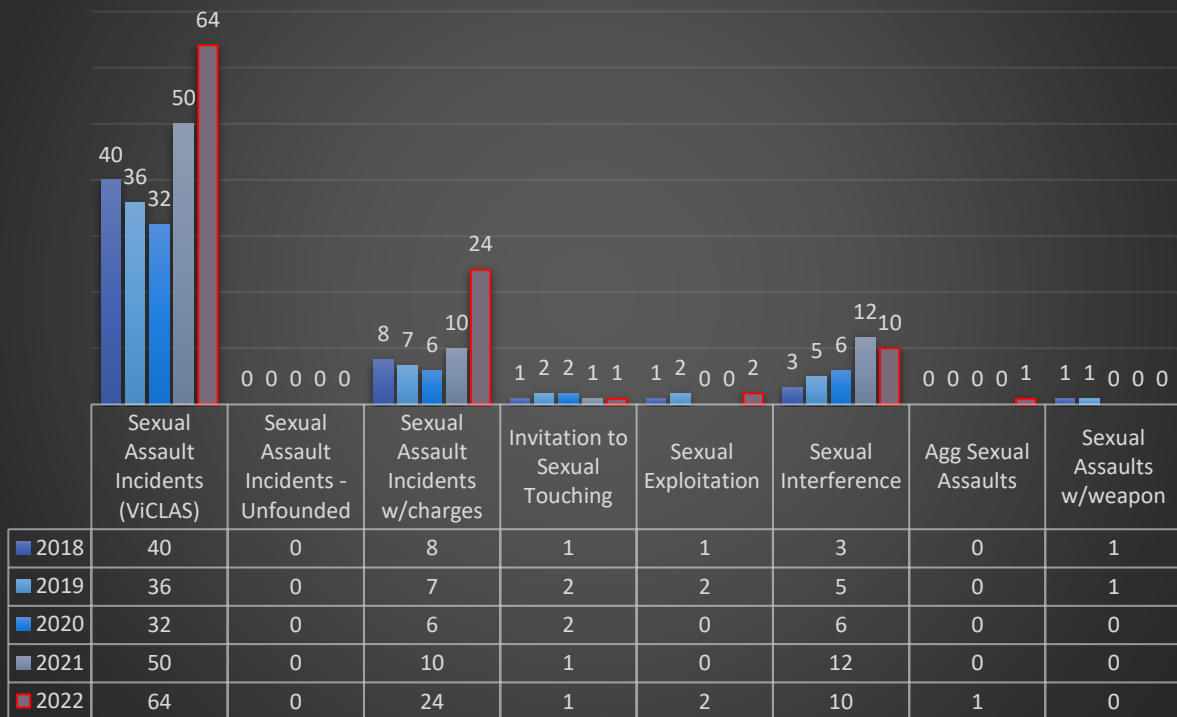
INCIDENTS	2018	2019	2020	2021	2022	Variance 2021-2022
Fatal MVC's	0	0	1	1	1	-
Reportable MVC's (w/o injuries)	422	423	284	196	258	+31.6%
Reportable MVC's (w/injuries)	61	42	35	34	64	+88.2%



Sexual Offences;

INCIDENTS / OFFENCES	2018	2019	2020	2021	2022	Variance 2021-2022
Sexual Assault incidents (reported)	40	36	32	58	64	+10.3 %
Sexual Assault incidents – UNFOUNDED	0	0	0	0	0	-
Sexual Assault incidents w/charges	8	7	6	20	24	+20 %
Invitation to Sex. Touching	1	2	2	5	1	-80 %
Sexual Exploitation	1	2	0	1	2	+100 %
Sexual Interference	3	5	6	9	10	+11 %
Aggravated Sexual Assaults	0	0	0	0	1	-
Sexual Assaults w/weapon	1	1	0	0	0	-

Sexual Offences (Incident Based) - 5 year Comparisons

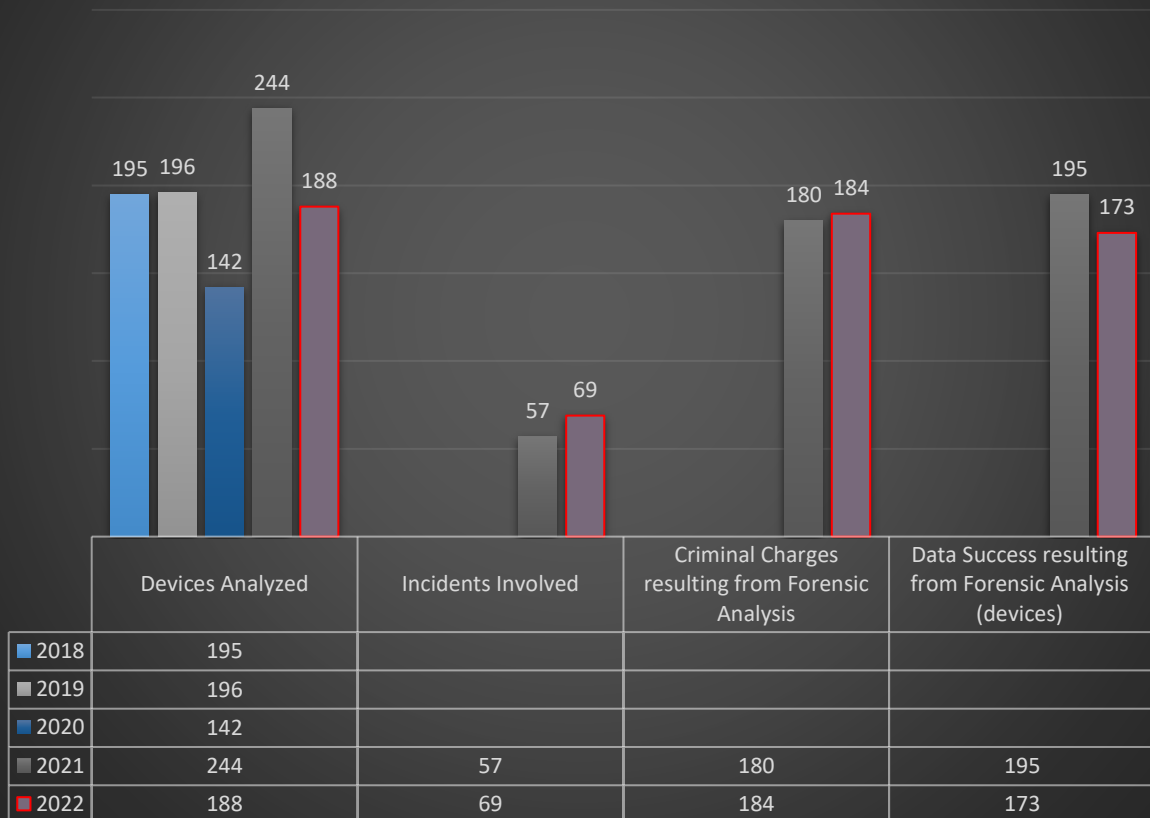


Forensic Computer Analysis:

INCIDENTS / OFFENCES	2018	2019	2020	2021	2022	Variance 2021-2022
Devices analyzed	190	195	142	244	118	-
SIMS analyzed					69	-
TOTAL DEVICES/SIMS	190	195	142	244	188	-23%
Incidents involved	63	80	40	57	49	-14%
Criminal Charges resulting from forensic analysis	35	51	67	180	184	+2.2%
Data success resulting from forensic analysis (devices)	140	158	90	195	173	-11%

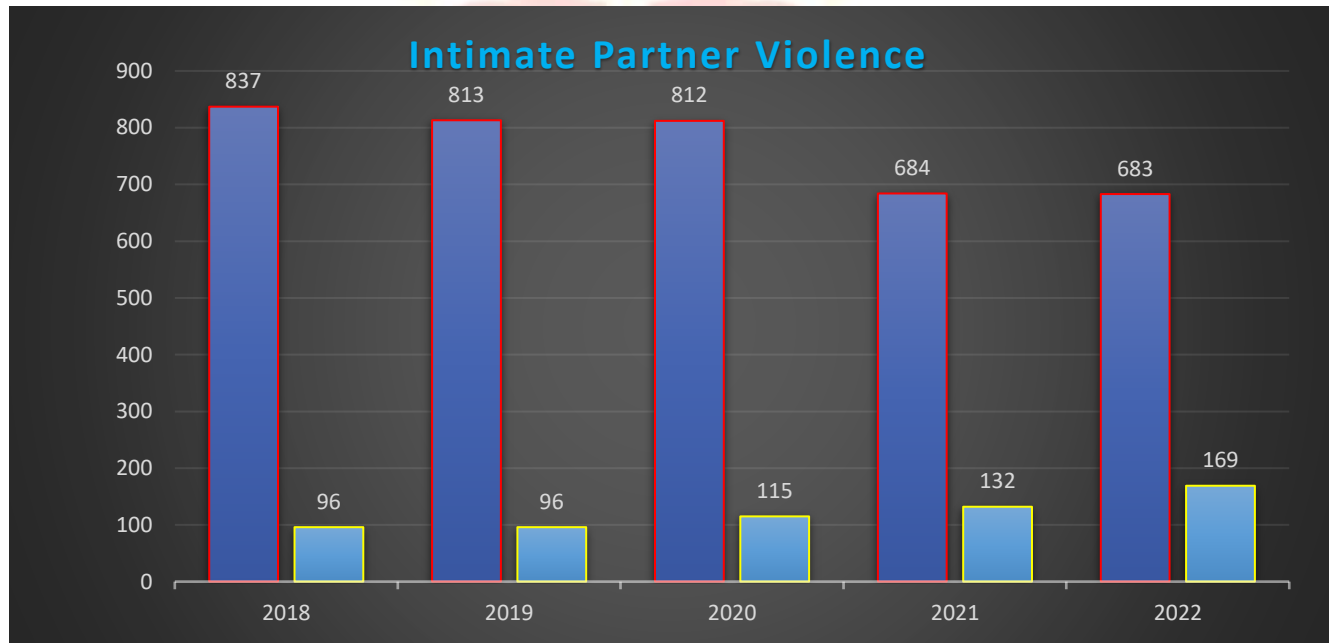
*Reporting requirements for court prosecutions are increasing in depth and technical analysis. Monitoring this trend for resourcing.

Digital Forensics Unit



Intimate Partner Violence;

INCIDENTS / OFFENCES	2018	2019	2020	2021	2022	Variance 2021-2022
Intimate Partner Violence Incidents	837	813	812	684	683	-0.14%
IPV related charges	96	96	115	132	169	+28%



Mental Health Analysis;

INCIDENTS	2019	2020	2021	2022	Variance 2021-2022
MHA Apprehensions	219	260	272	275	+1.1%
Hours spent at STEGH (apprehensions)	284.8	246.4	286	298.3	+4.3%
Cost (officer wage at STEGH with apprehension)	\$26,671.64	\$23,623.58	\$29,099.04	\$31,088.95	+\$1,989.91
Wait times at STEGH (hrs)	1.3	1.0	1.1	1.3	
Incidents categorized as involving MH	1312	2160	2173	1764	-18.8%
Incidents that MOST attended	-	522	668	462	-30.8%
After the fact MOST attendance	-	318	322	197	-39%

MOST referrals to community supports	-	152	836	941	+12.5%
Number of adults supported by MOST	-	821	806	526	-34.7%

2022 QUARTERLY DATA FOR OFFICER WAIT-TIMES (HOURS) AT STEGH

Q1 = 77.5 officer hours spent at STEGH (Q1 2021 = 56.54hrs)

Q2 = 74.7 officer hours spent at STEGH (Q2 2021 = 71.62hrs)

Q3 = 71.6 officer hours spent at STEGH (Q3 2021 = 66.69hrs)

Q4 = 74.5 officer hours spent at STEGH (Q4 2021 = 91.14)

***298.3 hrs at STEGH in 2022; *286 hrs at STEGH in 2021**

